

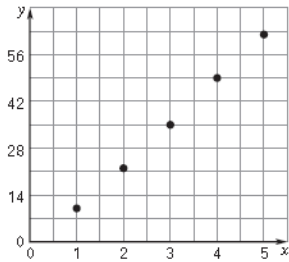
3. negative correlation

4. positive correlation

5. approx. no correlation

7. 0 8. 0.5 9. -1

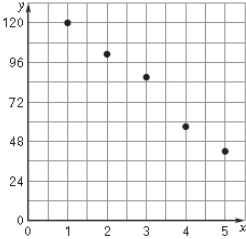
10. a.



b. Sample answer: $y = 13x - 4$

c. about 256

11. a.



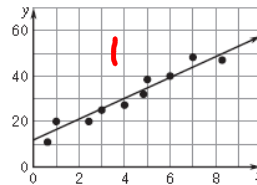
b. Sample answer: $y = -20x + 141$

c. about -259

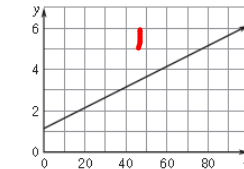
16. B

17. The line should go through the middle of the data points.

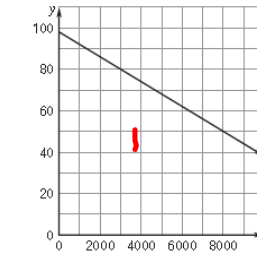
Sample:



19. $y = 0.05x + 1.14$



20. $y = -0.006x + 98.1$



p. 117 answers

24. Sample answer:
 $y = 0.389x + 19.8$

25. Sample answer:
 $y = 101.3x + 2236.6$

26. Sample answer:
 $y = -0.001861x + 212.2$;
about 186°F

31. $y = -\frac{1}{6}x - \frac{5}{6}; -1$

~~32. $y = \frac{1}{4}x - \frac{3}{4}; -\frac{1}{2}$~~

33. $y = \frac{3}{4}x - \frac{5}{4}; -2\frac{3}{4}$

~~34. $y = 0.5x - 4; 2$~~

35. $y = \frac{4x+9}{x}; 5\frac{1}{2}$

~~36. 2 37. 9 38. 12~~

39. 0 ~~40. 10~~ 41. 1

28 points